



Knightsbridge®
the mark of quality

INSTALLATION & MAINTENANCE MANUAL XT468 Network Cable Tester



RoHS
COMPLIANT



78



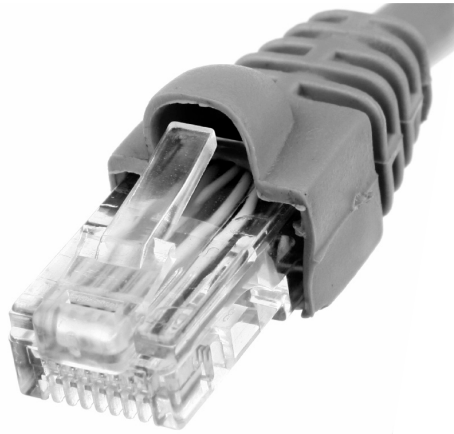


GENERAL INSTRUCTIONS

These instructions should be read carefully and retained after use for further reference and maintenance.

The Knightsbridge remote network cable tester will locate short circuit, open circuit and wrong connections using the attached remote. Confirms connection and pin out status on RJ45 based systems like CAT5e and CAT6. Also covers UTP, FTP and RJ11/RJ12. Dual speed for testing.

CABLE TEST



T568B RJ45

Pin No.	Conductor colour
1	white and orange
2	orange
3	white and green
4	blue
5	white and blue
6	green
7	white and brown
8	brown

T568A RJ45

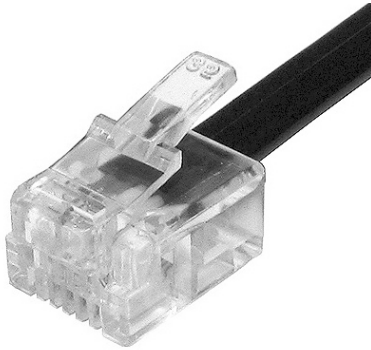
Pin No.	Conductor colour
1	white and green
2	green
3	white and orange
4	blue
5	white and blue
6	orange
7	white and brown
8	brown





RJ11

Pin No.	Conductor colour
1	
2	Black
3	Red
4	Green
5	Yellow
6	



RJ12

Pin No.	Conductor colour
1	White
2	Black
3	Red
4	Green
5	Yellow
6	Blue

OPERATION PROCEDURE

This product will test:

- RJ45 to RJ45
- RJ45 to RJ11/RJ12
- RJ11/RJ12 to RJ11/RJ12

- To operate: remove battery cover and insert 9V battery (not supplied). Replace battery cover and switch on the power on the main tester
- Connect cable you wish to test to either the RJ45 socket or RJ11/RJ12 socket on the main unit
- Connect the other end of the cable to the matching socket on the smaller unit
- If correctly wired, lights from 1-8 for RJ45 or lights 1-6 for RJ11 & RJ12 will light up green on both units in sequence
- If incorrectly wired, lights from 1-8 for RJ45 or lights 1-6 for RJ11 & RJ12 will light up red indicating an opposite connection has been detected
- If no lights activate there is a break in the cable





WARNING

This cable tester cannot test energised products

- If pin activity lights appear weak, change the battery (9V Battery)
- Testing cannot be verified if connector ends are not fully inserted into the units
- Always ensure you use quality tools to crimp connections
- This cable tester is for use with RJ45, RJ11/RJ12 connectors only

WARRANTY

This product has a warranty of 1 year from date of purchase. Failure to install this product in accordance with the current edition of the IEE Wiring Regulations, improper use, or removal of the batch codes will invalidate the warranty. If this product should fail within its warranty period it should be returned to the place of purchase for a free of charge replacement. ML Accessories does not accept responsibility for any installation costs associated with the replacement product. Your statutory rights are not affected. ML Accessories reserve the right to alter product specification without prior notice.



ML Accessories Limited
LU5 5TA
www.mlaccessories.co.uk

AKJUN17_v2

