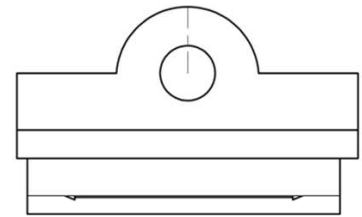
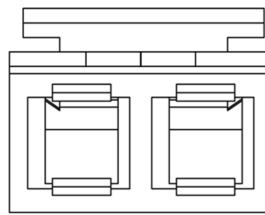
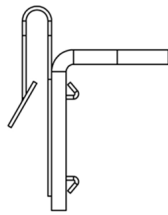
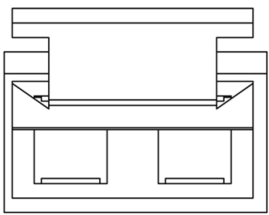
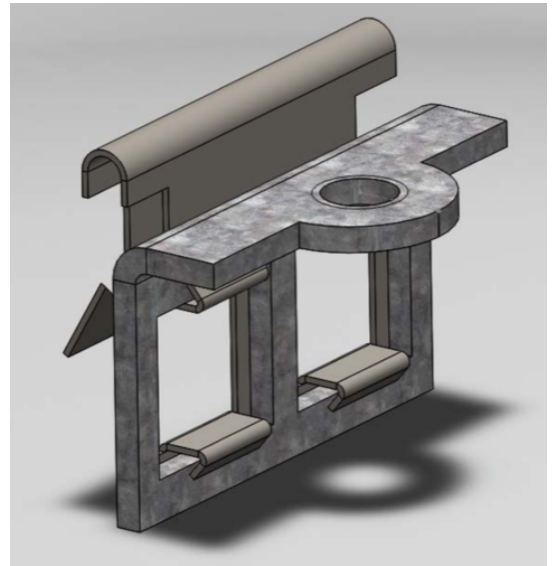


BACK BOX REPAIR CLIP



DATA SHEET

Back box repair clip has been designed as an advanced mechanism used to further optimise the lifespan of metal back boxes and prolong their performance, if any of the lugs or threads are damaged.

A unique push together 2 piece clip system, overall dimensions 18mm x 8mm, 0.25mm. Comprising a sprung, calibrated and tensioned steel plate against a 1mm galvanised metal M3.5 thread, clips securely to a back box, allowing face plate adjustment and levelling.

An award winning and innovative: - Time, labour and cost saving, solution for every electrical back box repair.

QUICK INSTALL

Clear any snags from old lug, clear external edge and straighten box side. Apply pressure and push to secure, by hand or with pliers.

Do not strike or use hammers, as this will compromise and damage the component and **do not** over tighten screws on faceplate.